

**“Expression of Interest”**  
for hosting institute of the 8<sup>th</sup> RD20 Conference  
in 2026

**Council for Scientific and Industrial Research  
(CSIR)**

<https://www.csir.co.za/>

**SOUTH AFRICA**

# Information of presenter

Institute	Council for Scientific and Industrial Research (CSIR)
Country	South Africa
Representative of Institute for RD20	Title: Dr. Name: Sandile Malinga Position/affiliation: Divisional Group Executive: Smart Society
Contact person for this proposal	Title: Dr. Name: Thabo Hlalele Position: Energy Research Center Manager

# Tentative plan for the 8<sup>th</sup> RD20 Conference

Dates	October 19 – 23, 2026 (Option 2)
Meeting venue	Conference facilities in CSIR ICC and in a hotel close to CSIR ICC Pretoria
Program overview (including possible side event such as specific WS)	October 20 (Tue): Technical Session October 21 (Wed): Discussion for TS wrap-up October 22 (Thu): Leaders Session October 23 (Fri): Site visit: CSIR/Eskom/other facilities
partners and sponsorship opportunities	Internal budget: CSIR Sponsorship Preliminary: To approach RD20, etc. Government subsidy: To approach DSTI, DEE, NRF, etc. Contribution from industry: To approach Eskom, Sasol, etc.

# Facilities at the premises at the CSIR



The CSIR ICC, Pretoria Main campus



Diamond Auditorium



Ruby Auditorium

# Facilities at the CSIR Pretoria Campus – ICC Meeting Rooms



# Accommodation

**City Lodge Hotel Lynnwood**  
**2.4km from CSIR ICC**



**The Capital Menlyn Maine**  
**4.7 km from CSIR ICC**



**Casa Toscana Lodge**  
**1.1 km from CSIR ICC**

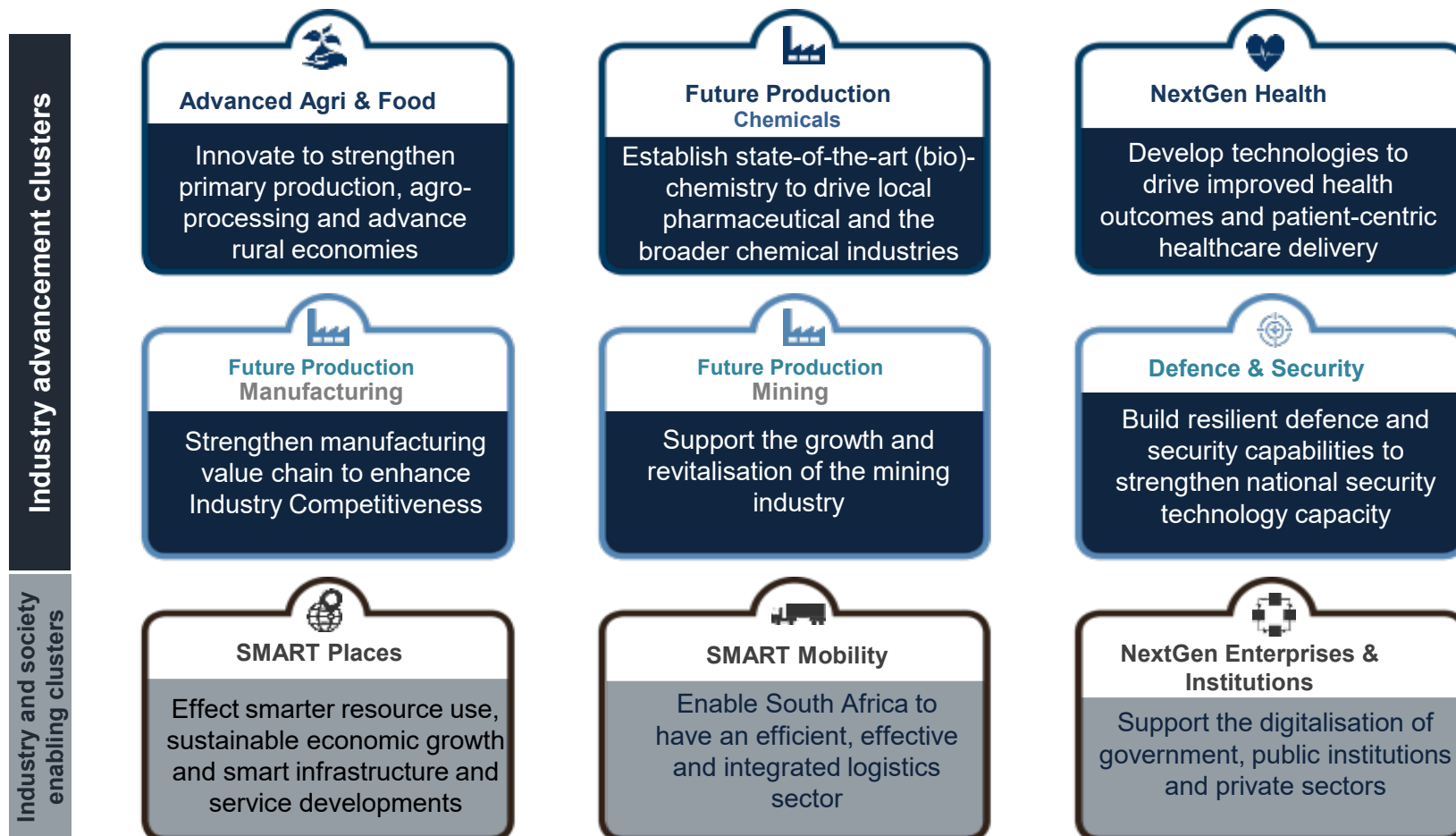


**The Maslow Time Square**  
**5.5 km from CSIR ICC**



# Technology – Sector Clusters

## Positioned to drive SA's industrialisation



# Indoor Energy Storage lab

- **Testing Energy Storage technologies**
  - **Indoor**
    - Lithium-ion Batteries
    - Next Gen batteries
    - Local Standards
    - Battery Management Systems
  - **Benefits**
    - Innovation
    - Localization
    - Demonstration
    - Standardization
    - Knowledge dissemination



**Battery Management System**

**Lithium Fire Dowsing System**

**Lithium Fire Fighting Protocols**

**E-mobility Programme**

# Sightseeing

**Pretoria National Botanical Gardens**  
2.5 km from CSIR



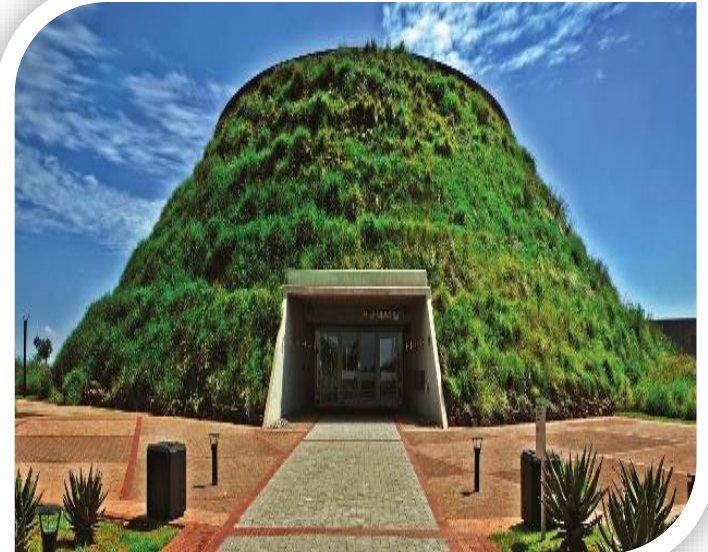
**Union Buildings**  
9.2 km from CSIR



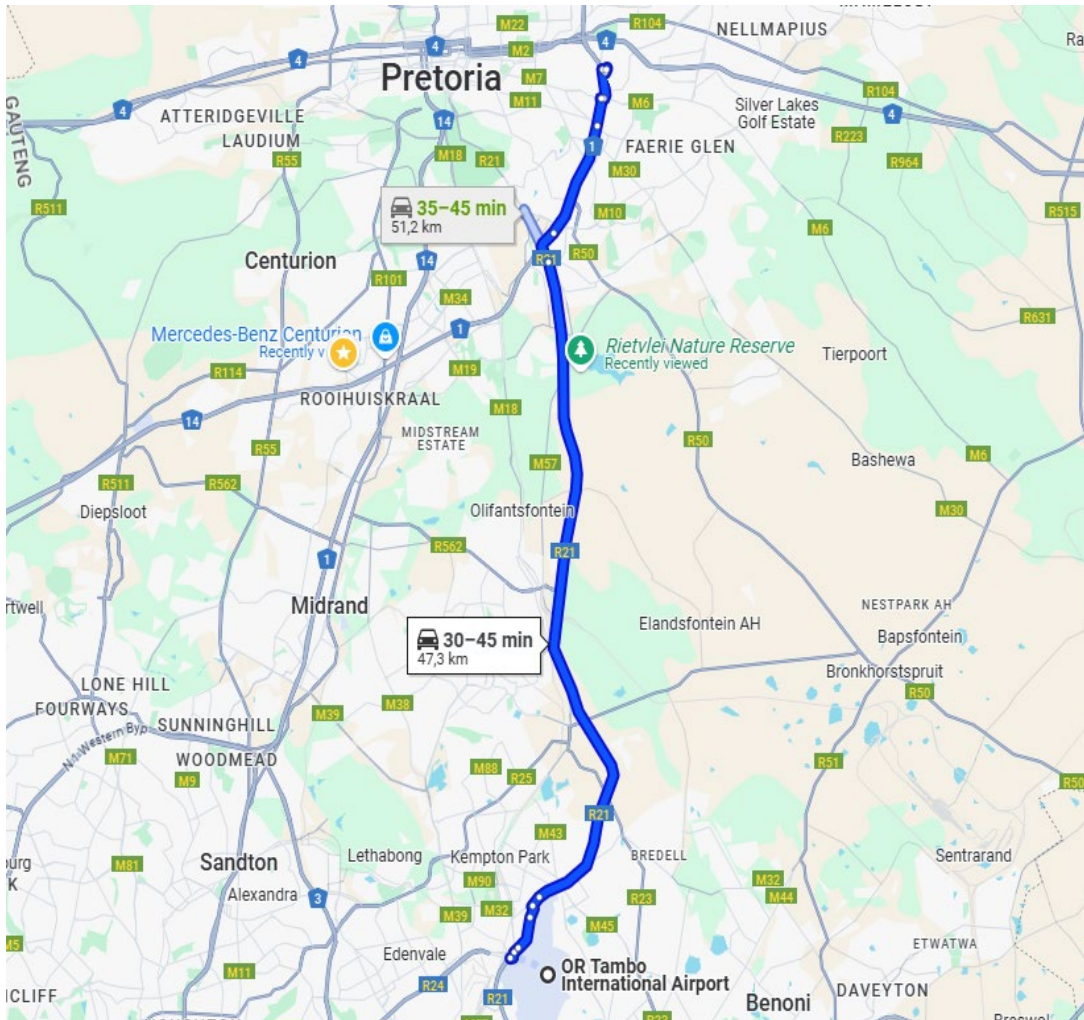
**Freedom Park Heritage Site & Museum**  
25.4 km from CSIR



**Cradle of Humankind**  
57.8 km from CSIR



# Destination CSIR



The main international airport is **OR Tambo International Airport**

- 30 – 45 min by car
- Approx 1 hour by Gautrain

Hatfield station to CSIR ICC

- Cost of bus trip for rail users: R10
- Cost of bus trip for non rail users: R23
- Travel to Hatfield Station from any station on the Gautrain route (see website for train fares)
- Disembark from train at Hatfield Station and board the H2 Lynnwood Gautrain Bus
- Disembark from bus at H2-11 CSIR International Convention Centre

## OR Tambo International Airport to CSIR ICC

- Cost of trip one way including bus fare: R229
- Cost of return trip including bus fare: R435
- At OR Tambo Station board the train to Sandton via Malboro Station
- Disembark at Malboro Station and board the train to Hatfield Station
- Disembark At Hatfield Station and board the H2 Lynnwood Gautrain Bus
- Disembark from bus at H2-11 CSIR International Convention Centre